

## **MC402 Final Assembly**

### **Instructions For Country Groups 01-10**

The MC402 is designed for use in Country Groups 01-10. All conversions are performed by moving two identical thermistors located on the Power Transformer Terminal Block to new locations as illustrated.

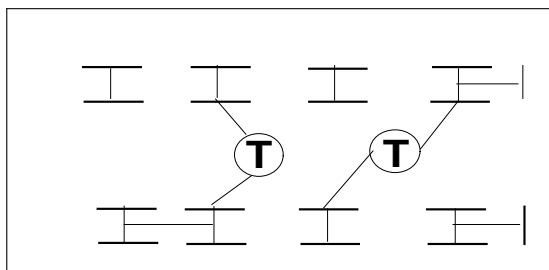
### **COUNTRY GROUP 01 - USA AND OTHERS**

Parts Required:

- 1 – MC402
- 1 – 089042 Fuse: 15A 250V SB Ceramic
- 1 – 170937 Line Cord Set

Step 1: Wire Power Transformer Terminal Block as illustrated in Figure 1.

Step 2: Insert Fuse P/N 089042 into Rear Panel.



**Fig. 1 Wired for 120VAC Operation**

## COUNTRY GROUP 02 - JAPAN

### Parts Required:

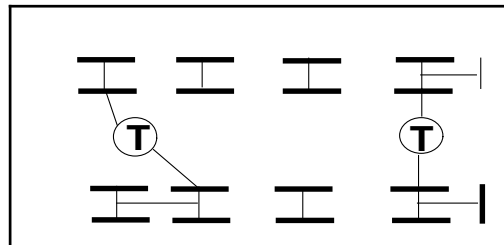
- 1 – MC402
- 1 – 126901 Input Rating Decal (100V~ 50/60Hz 12A)
- 1 – 125781 Line Cord Tag (100V)
- 1 – 170937 Line Cord Set
- 1 – 089042 Fuse: 15A 250V SB Ceramic

Step 1: Wire Power Transformer Terminal Block as illustrated in Figure 2.

Step 2: Change the screened Rear Panel Line Cord Input Rating to 100V~50/60Hz 12A, using label P/N 126901

Step 3: Insert Fuse P/N 089042 into Rear Panel Fuseholder.

Step 4: Tag Line Cord P/N 170937 with P/N 125781 (100V) and ship with unit.



**Fig. 2 Wired For 100VAC Operation**

### COUNTRY GROUP 03 - TAIWAN

Parts Required:

- 1 – MC402
- 1 – 125731 Date of Manufacture Decal
- 1 – 126095 Line Cord Tag (110V)
- 1 – 126902 Input Rating Decal (110V~ 60Hz 11A)
- 1 – 089042 Fuse: 15A 250V SB Ceramic
- 1 – 170937 Line Cord Set
- 2 – 126966 EMC Power Labels

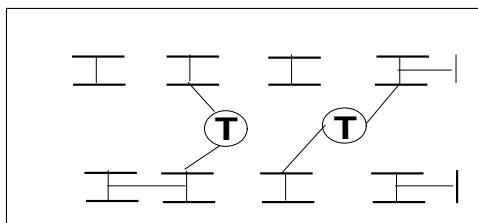
Step 1: Wire Power Transformer Terminal Block as illustrated in Figure 3.

Step 2: Insert Fuse P/N 089042 into Rear Panel Fuseholder.

Step 3: Changed screened Rear Panel Line Cord Input Rating to 110V~ 60Hz 11A using P/N 126902.

Step 4: Attach Line Cord Tag P/N 126095 to Line Cord P/N 170937 and ship with unit.

Step 5: Two EMC Power Labels 126966 are to be applied, one to the rear panel adjacent to the Input Receptacle and the other to the shipping carton.



**Fig. 3 Wired for 120VAC Operation**

## COUNTRY GROUP 04 - ENGLAND

### Parts Required:

- 1 – MC402
- 1 – 089104 Fuse (T 6.3AL 250V SB)
- 1 – 178163 Fuse-holder Cap (5x20 IEC)
- 1 – 126614 Fuse Replacement Decal (T 6.3AL 250V SB)
- 1 – 125783 Line Cord Tag (230V)
- 1 – 126903 Input Rating Decal (230V~50/60Hz 5A)
- 1 – 170378 Line Cord Set For England
- 6 – 017726 Plug (Red)
- 6 – 017727 Plug (Black)

Step 1: Wire Power Transformer Terminal block as illustrated in Figure 4.

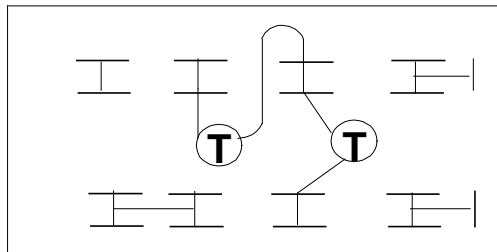
Step 2: Inset Fuse P/N 089104 (T 6.3AL 250V SB) into Rear Panel using Fuse-holder Cap P/N 178163 and place P/N 126614 (Fuse Decal) over the screened fuse rating.

Step 3: Changed screened Rear Panel Line Cord Input Rating to 230V~ 50/60Hz 5A using P/N 126903.

Step 4: Tag Line Cord P/N 170378 with P/N 125783 (230V).

Step 5: Cut and Remove JMP-1 on the Meter PCB.

Step 6: Place P/N 017726 (Red Plug) and P/N 017727 (Black Plug) into appropriate output terminal connectors.



**Fig. 4 Wired for 240VAC Operation**

## COUNTRY GROUP 05 - EUROPE

### Parts Required:

- 1 – MC402
- 1 – 089104 Fuse (T 6.3AL 250V SB)
- 1 – 178163 Fuse-holder Cap (5x20 IEC)
- 1 – 126614 Fuse Replacement Decal (T 6.3AL 250V SB)
- 1 – 125783 Line Cord Tag (230V)
- 1 – 126903 Input Rating Decal (230V~50/60Hz 5A)
- 1 – 170200 Line Cord
- 6 – 017727 Plug (Black)
- 6 – 017726 Plug (Red)

Step 1: Wire Power Transformer Terminal block as illustrated in Figure 5.

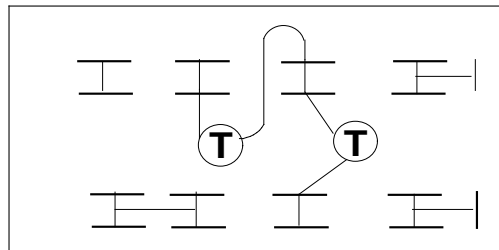
Step 2: Inset Fuse P/N 089104 (T 6.3AL 250V SB) into Rear Panel using Fuse-holder Cap P/N 178163 and place P/N 126614 (Fuse Decal) over the screened fuse rating.

Step 3: Changed screened Rear Panel Line Cord Input Rating to 230V~ 50/60Hz 5A using P/N 126903.

Step 4: Cut and Remove JMP-1 on the Meter PCB.

Step 4: Tag Line Cord P/N 170200 with P/N 125783 (230V) and ship with unit.

Step 5: Place P/N 017726 (Red Plug) and P/N 017727 (Black Plug) into appropriate output terminal connectors.



**Fig. 5 Wired for 240VAC Conversion**

## COUNTRY GROUP 06 - AUSTRALIA

### Parts Required:

- 1 – MC402
- 1 – 089104 Fuse (T 6.3AL 250V SB)
- 1 – 178163 Fuse-holder Cap (5x20 IEC)
- 1 – 126614 Fuse Replacement Decal (T 6.3AL 250V SB)
- 1 – 125784 Line Cord Tag (240V)
- 1 – 126904 Input Rating Decal (240V~50/60Hz 5A)
- 1 – 170989 Line Cord Set for Australia

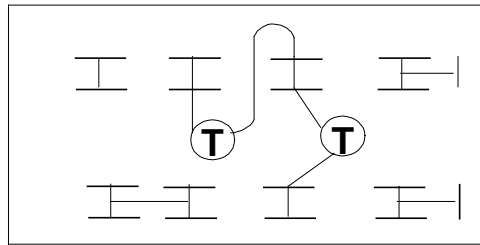
Step 1: Wire Power Transformer Terminal block as illustrated in Figure 6.

Step 2: Inset Fuse P/N 089104 (T 6.3AL 250V SB) into Rear Panel using Fuse-holder Cap P/N 178163 and place P/N 126614 (Fuse Decal) over the screened fuse rating.

Step 3: Changed screened Rear Panel Line Cord Input Rating to 240V~ 50/60Hz 5A using P/N 126904

Step 4: Cut and Remove JMP-1 on the Meter PCB.

Step 5: Tag Line Cord P/N 170989 with P/N 125784 (240V) and ship with unit.



**Fig. 6 Wired for 240VAC Conversion**

## COUNTRY GROUP 07 - SAUDI ARABIA

### Parts Required:

- 1 – MC402
- 1 – 089104 Fuse (T 6.3AL SB 250V)
- 1 – 178163 Fuse-holder Cap (5x20 IEC)
- 1 – 126614 Fuse Replacement Decal (T 6.3AL 250V SB)
- 1 – 125398 Line Cord Tag (220V)
- 1 – 126905 Input Rating Decal (220V~50/60Hz 5A)
- 1 – 170200 Line Cord

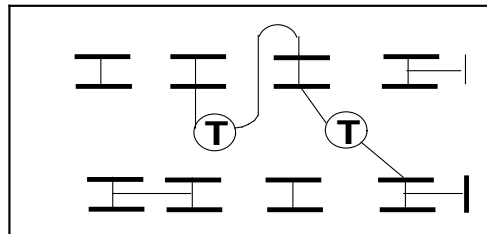
Step 1: Wire Power Transformer Terminal block as illustrated in Figure 7.

Step 2: Insert Fuse P/N 089104 (T 6.3AL 250V SB) into Rear Panel using Fuse-holder Cap P/N 178163 and place P/N 126614 (Fuse Decal) over the screened fuse rating.

Step 3: Changed screened Rear Panel Line Cord Input Rating to 220V~ 50/60Hz 5A using P/N 126905.

Step 4: Cut and Remove JMP-1 on the Meter PCB.

Step 5: Tag Line Cord P/N 170200 with P/N 125398 (220V) and ship with unit.



**Fig. 7 Wired for 220VAC Operation**

## COUNTRY GROUP 08 - KOREA

### Parts Required:

- 1 – MC402
- 1 – 089104 Fuse (T 6.3AL SB 250V)
- 1 – 178163 Fuse-holder Cap (5x20 IEC)
- 1 – 126614 Fuse Replacement Decal (T 6.3AL 250V SB)
- 1 – 125398 Line Cord Tag (220V)
- 1 – 126905 Input Rating Decal (220V~50/60Hz 5A)
- 1 – 171477 Korean Line Cord
- 1 – 126906 Tom Chung Regulatory Decal
- 1 – 125731 Date of Manufacture Label
- 1 – 126933 KETI Certification Label
- 1 – 126860 KTL Required Address Label

Step 1: Wire Power Transformer Terminal block as illustrated in Figure 8.

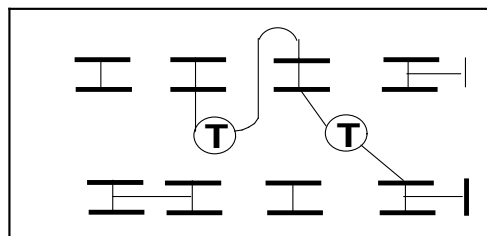
Step 2: Inset Fuse P/N 089104 (T 6.3AL 250V SB) into Rear Panel using Fuse-holder Cap P/N 178163 and place P/N 126614 (Fuse Decal) over the screened fuse rating.

Step 3: Changed screened Rear Panel Line Cord Input Rating to 220V~ 50/60Hz 5A using P/N 126905.

Step 4: Tag Line Cord P/N 171477 with P/N 125398 (220V) and ship with unit.

Step 5: Cut and Remove JMP-1 on the Meter PCB.

Step 6: Apply decals 126906, 125731, 126933 and 126860 to Product.



**Fig. 8 Wired for 220VAC Operation**



## COUNTRY GROUP 10 - HONG KONG

### Parts Required:

- 1 – MC402
- 1 – 089104 Fuse (T 6.3AL 250V SB)
- 1 – 178163 Fuse-holder Cap (5x20 IEC)
- 1 – 126614 Fuse Replacement Decal (T 6.3AL 250V)
- 1 – 125398 Line Cord Tag (220V)
- 1 – 126907 Input Rating Decal (220V~50Hz 5A)
- 1 – 170378 Line Cord Set

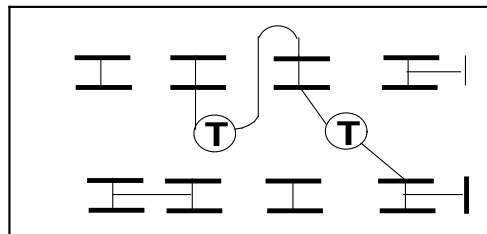
Step 1: Wire Power Transformer Terminal block as illustrated in Figure 9.

Step 2: Inset Fuse P/N 089104 (T 6.3AL 250V SB) into Rear Panel using Fuse-holder Cap P/N 178163 and place P/N 126614 (Fuse Decal) over the screened fuse rating.

Step 3: Changed screened Rear Panel Line Cord Input Rating to 220V~ 50/60Hz 5A using P/N 126907.

Step 4: Cut and Remove JMP-1 on the Meter PCB.

Step 5: Tag Line Cord P/N 170378 with P/N 125398 (220V) and ship with unit.



**Fig. 9 Wired for 220VAC Operation**

---

### **NOTES:**

- |               |           |  |
|---------------|-----------|--|
| 4/23/03 Rev A | CN# 16963 | Adds labels 125731, 126860 and 126933 to Korean Group 8 Assembly Instructions. |
| 6/30/03 Rev B |           | Adds two EMC Power labels 126966 to Taiwan Conversion Instruction              |